

H-P35 Series

HIGH PERFORMANCE OEM QUALITY HYDROGEN PRESSURE REGULATOR 高性能氢气减压器

Key Features

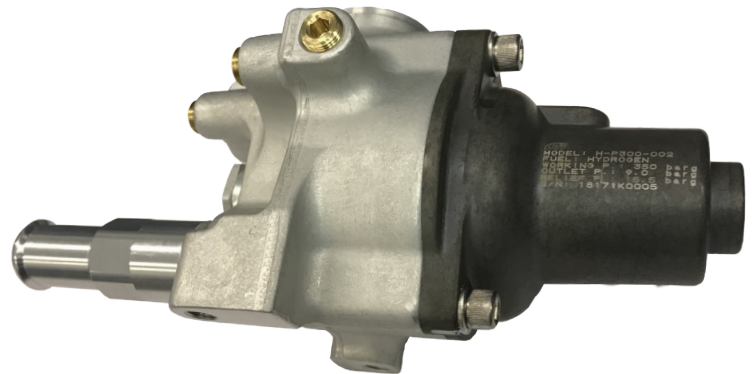
Designed for hydrogen applications up to 35 Mpa (5,000 psi). The H-P35 Series Regulator delivers stable outlet pressures under varying fuel cell flow demands and inlet pressures. This regulator benefits from 25 years of evolution in CNG applications in order to be a reliable, cost effective product.

- Balanced design for stable outlet pressure at all tank pressures
- Optional integrated high pressure lock off valve
- Optional integrated high pressure sensor
- Heavy duty design validated to over 1.8 million cycles
- Integrated high flow Pressure Relief Valve (PRV)
- Wide range of factory set output pressures available

主要特性

H-P35系列产品适用于35Mpa氢气系统。该系列减压器的出口压力稳定，可以满足不同燃料电池电堆的压力和流量需求，其设计基于超过25年的CNG减压器设计及制造经验，产品性能稳定，性价比高。

- 出口压力稳定；
- 集成式电磁截止阀可选；
- 集成式压力传感器可选；
- 专为重型车设计，耐久寿命为180万次循环；
- 集成大流量压力释放阀；
- 出口压力设置范围大。



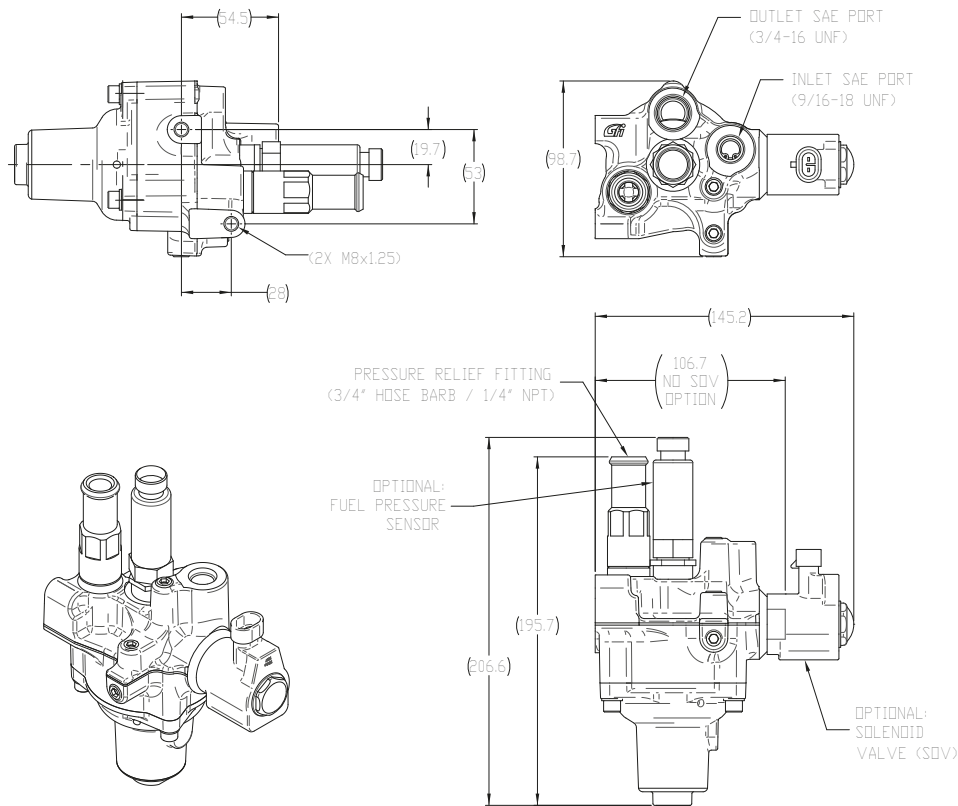
- Engineered to meet International Standards and Regulations
Including ANSI HGV 3.1, ECE R134, EC 79/2009, and UN GTR No. 13.

- All designs are subjected to rigorous qualification testing
Including long-term endurance cycling, severe vibration, and accelerated cyclic corrosion.

SPECIFICATIONS 技术参数

H-P35 Series

GENERAL INFORMATION 基本参数			
APPLICATION 应用	Hydrogen high pressure regulator 氢气减压器		
DESIGN 设计	Balanced single stage, pintle and diaphragm type 平衡式单级减压, 膜片轴针式		
BODY MATERIAL 机体材料	Forged Aluminum 锻铝		
FUEL TYPE 燃气类型	Hydrogen		
PERFORMANCE 性能			
MAX SERVICE PRESSURE 最大入口压力	35 MPa (5,000 psi)		
REGULATED FLOW RATE 流量	Up to 10 g/s Hydrogen		
OUTLET PRESSURE 出口压力	Factory adjustable: 200 to 1,000 kPa (29 to 145 psig)		
WORKING TEMPERATURE 工作温度	-40°C to 120°C (-40°F to 248°F)		
PRESSURE RELIEF VALVE 安全压力阀	Multiple settings available between 1,100 and 1,800 kPa (160 to 260 psig) 1100~1800kpa可调		
FILTER (REPLACEABLE) 滤芯	40 µm, 99% efficiency 40 µm, 过滤效率99%		
PRESSURE SENSOR 压力传感器	Customer defined		
SOLENOID 电磁阀 (to be confirmed)	Voltage 额定电压	12 V	24 V
	Current draw 电流	0.83 A	0.54 A
	Control 控制方式	Saturated	
CONNECTIONS 连接			
INLET THREAD TYPE 入口接头规格	9/16" - 18 UNF		
OUTLET THREAD TYPE 出口接头螺纹	3/4" - 16 UNF		
PRV INTERFACE PRV接头	3/4" Hose Barb or 1/4"-18 Female NPT		
ELECTRICAL CONNECTOR (solenoid) 电磁阀接插件	AMP Super Seal AMP超级密封		



IATF 16949:2016 registered
a Westport Fuel Systems company

